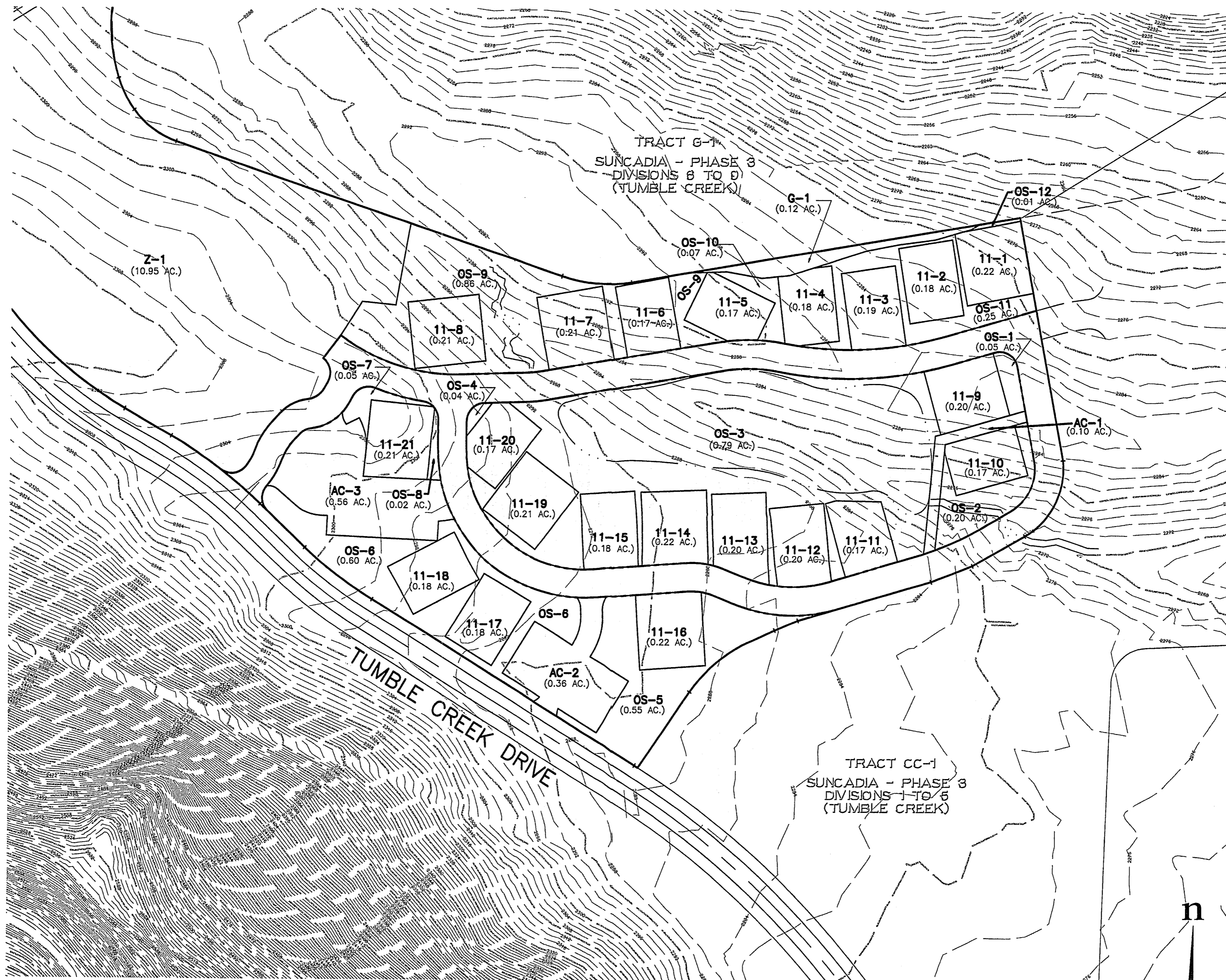


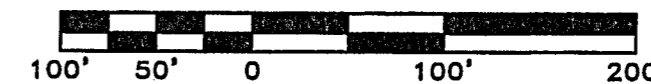
A PORTION OF SECTIONS 14 AND 23, TWP. 20 N., RGE., 14 E., W.M.,
KITITAS COUNTY, WASHINGTON



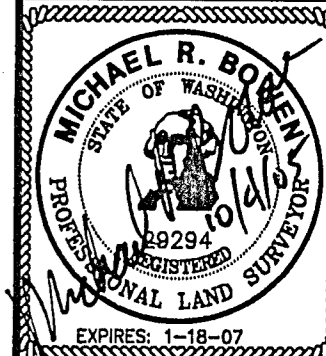
TRACT LEGEND

- G GOLF
- OS OPEN SPACE
- Z FUTURE DEVELOPMENT
- AC ACCESS
- P PARKING TRACT

SCALE: 1" = 100'



REVISIONS		
NO.	DESCRIPTION/DATE	BY



ESM CONSULTING ENGINEERS, L.L.C.
 33915 1st Way South
 Federal Way, WA 98003
 FEDERAL WAY (206) 832-8113
 BOTHELL (206) 815-8114
 CLE ELUM (206) 874-1808

www.esmcivil.com

Civil Engineering
 Public Works
 Land Surveying
 Project Management
 Land Planning
 Landscape Architecture

SUNCADIA, L.L.C.

CABINS AT TUMBLE CREEK - DIV. 11

PRELIMINARY PLAN

KITITAS COUNTY WASHINGTON

JOB NO.:	998-310-005
DWG. NAME:	PP-03
DESIGNED BY:	
DRAWN BY:	R.J.W.
CHECKED BY:	
DATE:	9-28-05
PRINT DATE:	

SHEET

PP-03